

FILED FOR RECORD: 6-24 1974 at 9:00 o'clock A.M.
 DULY RECORDED: 6-25 1974 at 9:00 o'clock A.M.
 INSTRUMENT NO. ALLEN STURROCK, TYLER COUNTY CLERK
 BY Lynn Hays DEPUTY

TYLER COUNTY COMMISSIONER'S COURT
 SPECIAL MEETING
 JUNE 14, 1974
 10:00 A.M.

VOL 002 PAGE 369

At the Meeting of the Tyler County Commissioner's Court held on the above date and time, all members except Comm. Parks were present. The Meeting opened with a prayer.

A motion was made by Judge Mann and seconded by Comm. Belt to accept the bid of Jack Lane Ford for \$3,951.60 for a new Sheriff's car, this to be paid out of Revenue Sharing. See attached bid. All voted yes, none voted no.

A motion was made by Comm. Best and seconded by Comm. Belt to table the bids on two typewriters and a cash register for the County Tax Assessor & Collector's Office at the request of Tax Assessor, Barbara Tolber. All voted yes, none voted no.

A motion was made by Comm. Best and seconded by Comm. Jordan to accept the bid of \$485.00 by Joe Hensarling to mow the Tyler County Airport. See attached bids. All voted yes, none voted no.

A motion was made by Comm. Best and seconded by Comm. Jordan to accept the amount of \$1715.87 as a fee by Gulf States Utilities for relocating of facilities along the new proposed route of FM. Road #1632, Gulf States requests that this be a lump sum figure. See attached letter and plans. All voted yes, none voted no.

A motion was made by Comm. Belt and seconded by Comm. Best to accept the budget as prepared by the County Auditor for budgeting of the Revenue Sharing Checks. All voted yes, none voted no.

A motion was made by Comm. Jordan and seconded by Comm. Belt to accept the bid submitted by George P. Bane, Inc. in the amount of \$34,150.00 for a motor grader as to specifications. This to be paid by time warrants. Warrants to be disposed of by the County. All voted yes, none voted no.

There being no further business, the Meeting adjourned.

SIGNED: Tom D. Mann Tom D. Mann, County Judge
Joe Best Joe Best, Comm. Pct.#1
 ABSENT H.M. Parks, Comm. Pct.#2'
Kenneth C. Belt Kenneth Belt, Comm. Pct.#3
James R. Jordan James R. Jordan, Comm. Pct.#4
 ATTEST: Allen Sturrock Allen Sturrock, County Clerk



NOTICE OF EQUALIZATION

E.VOL 002 PAGE 370

In obedience to the order of the Board of Equalization regularly convened and sitting, notice is hereby given that said Board of Equalization will be in session at its regular meeting place in the Courthouse in the town of Woodville, Tyler County, Texas at 9:00 A.M., on July 15, 16, and 17 from 9:00 A.M. to 12:00 Noon for Individual taxpayers, July 23--9:00 A.M. to 12:00 Noon, Oil and Gas Companies. July 24--9:00 A.M. to 12:00 Noon and 1:00 P.M. to ?-- Timber Companies, July 25--9:00 A.M. to 12:00 Noon--Railroads, 1:00 P.M. to 4:00 P.M.--Utilities and Pipelines, for the purpose of determining, fixing and equalizing the value of any and all taxable property located in Tyler County, Texas for taxable purposes for the year 1974, and any and all persons interested or having business with said Board are hereby notified to be present.

Individuals whose tax values are being considered for a change will be notified by mail, as required by law.

Allen Sturrock
County Clerk Tyler
County, Texas

Tyler County, Woodville, Texas,

17th day of June, 1974.

NO. _____ TIME: _____

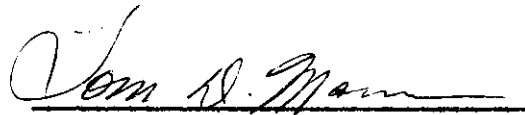
ALLEN STURROCK, COUNTY CLERK
TYLER COUNTY, TEXAS
BY: Allen Sturrock

ORDER DIRECTING THE COUNTY CLERK TO
ADVERTISE MEETING OF THE BOARD OF EQUALIZATION

BE IT REMEMBERED that the Board of Equalization in and for Tyler County, Texas, having been in session on this 8th day of April A. D., 74, the following order was, upon motion of Commissioner Parks, and duly seconded by Commissioner Best, unanimously carried and adopted, to-wit:

The County Clerk is hereby authorized and directed to give notice of meeting of the Board of Equalization by publication in a newspaper published in Tyler County, Texas, for at least ten days prior to said meeting of said Board.

The County Clerk is also instructed to give individual notice to all taxpayers whose properties are raised, if their addresses are known.


County Judge

Tyler County, Woodville, Texas

17th day of June A. D., 74.

JACK LANE FORD INC.

WOODVILLE, TEXAS

104 PINE ST.

PHONE 713 BU 3-2526

Proposal to: Tyler County Commissioner Court Date 6/14/74
Woodville, Texas



Year 1974; Make Ford Model Galaxie 500 Body Style 4 Door
Engine 400 CID, Color White :D

Quotation good until _____

Price FOB Woodville \$ _____

Equipped as follows:

1. Vinyl Seat Trim - Brown		
2. Rear Bumper Guards		
3. Tinted Glass Complete		
4. Remote Left Hand Mirror		
5. Cruise O Matic Transmission		
6. Power Steering		
7. Power Front Disk Brakes		
8. Air Conditioner		
9. 4 PR Belted Tires		
10.		
11.		
12.		
13.		
14.		
15.		

Total \$ 5,000.00

Less: Trade-in allowance: \$ 1,048.40

Description: Year _____; Make Pontiac;
Body style 4 Door;

Net Total: \$ 3,951.60

Tax, title & License Due if any \$ -0-

TOTAL PRICE: \$ 3,951.60

Comments: Can deliver this car NOW

SIGNED [Signature]
Authorized Signature

STATEMENT

Troop - Sanders
 Rt 1, Box 103 - 283 - 2736
 Medville, Texas 6-10-74
 County Clerk
 County of Taylor
 Medville, Tex
 Bid for mowing air port

~~400.00~~
 550.00

550.00

my BID

15 \$485⁰⁰/₁₀₀

Joe Remarking



MICHEL



MACHINERY CORPORATION

8185 EASTEX FWY.

P. O. BOX 7158

BEAUMONT, TEXAS 77706

VOL 002 PAGE 375

June 12, 1974

Tyler County Commissioners Court
Woodville, Texas

Attention: Mr. "Bo" Jordan,
County Commissioner

Dear Sir:

It gives me great pleasure to submit the following bid
for your consideration:

One (1) New and Current Model John
Deere JD570A Motorgrader -
e/w 85 H.P. Diesel Engine
with Turbocharger, 15.5 x 25
8PR L-2 Tires, ROPS Cab (OSHA
Approved) with Tinted Glass,
Front and Rear Windshield
Wipers, Defroster Fan, Cab
Heater and Deluxe Seat, Work
and Signal Lights, 12' All-
Hydraulic Moldboard with hyd-
raulic tilt and Hydraulic Side-
shift, Powershift Transmission,
Wet Hydraulic Power Disk Brakes,
Self Adjusting, Articulated
Power Steering, Rear End Differen-
tial Lock, All Gauges, Hourmeter,
Horn, Rear Belly Pan, and Dry
Type Air Cleaner with Air Restriction
Indicator, Plus other base equipment-

Price	\$31,500.00
Less Trade-In AC AD45	<u>5,695.00</u>
TOTAL BID	\$25,805.00

F.O.B. Spurger, Texas

HWY. 96 NORTH
JASPER, TEXAS

5309 GULF FREEWAY
TEXAS CITY, TEXAS

1806 AIRLINE HWY.
KENNER (NEW ORLEANS), LA.

Terms: 10 Days
Warranty: 12 Months Parts & Service
Delivery: 3 to 4 Weeks


Enclosed you will find brochures and specification sheets that should be helpful in evaluating our machine. If there is anything you need or any questions you may have, please do not hesitate to ask.

The machine can be serviced out of Jasper, Texas location as well as the home office location in Beaumont, Texas. This is a more closer location than any competitor has to offer. Also, I feel that our service to Tyler County on past deals gives a good account of our servicing and parts acquisition ability.

Thanking you for allowing us to submit this quotation and hoping we can be favored with the order, I remain,

Yours truly,

MICHEL MACHINERY CORPORATION


Graham Bennett
Sales Representative

GB:pb

Encl:



EVOL 002 PAGE 377

GEO. P. BANE, INC. / 220 N. GLENWOOD BLVD. / BOX 4299 / 597-6641 (214) / TYLER, TEXAS 75701

June 14, 1974

The Honorable County Judge
and Commissioners' Court
Tyler County
Woodville, Texas

Gentlemen:

We are pleased to submit our bid on your machinery requirements
for Precinct 4, as follows:

One new Fiat-Allis Model M-100 Series C Motor
Grader, with the following equipment:

- Hydraulic-Mechanical Controls;
- Full Power Steering;
- Self-Adjusting Four Rear Wheel
Power Brakes;
- Oil Clutch;
- Direct Electric Starting;
- 24 Volt Electric System;
- Dash Light;
- Red Combination Stop & Tail
Light;
- Horn;
- Foot Accelerator-Decelerator;
- Rear Bumper;
- Dry Type Air Cleaner;
- Filter Service Indicator;
- Exhaust Deflector and Rainshield;
- 13:00 X 24 (10 Ply) Tires, Front
and Rear;
- 12 Ft. Hydraulic Shift Moldboard;

WHITE-OLIVER
SEAMAN MIXERS



CONSTRUCTION EQUIPMENT
SALES - SERVICE - PARTS - RENTALS



MELROE BOBCAT
LORAIN CRANES

002 378

Less Allis-Chalmers 45 Motor Grader
taken in trade

Net difference F.O.B. Tyler County \$34,150.00

Delivery: From stock, subject to prior sale.

We pledge the best in parts and service should you favor us with
an order. We are enclosing descriptive literature on the M100C
Motor Grader, and hope that we may serve you.

Time Warrants to be disposed
of by Tyler County.

Sincerely yours,

GEORGE P. BANE, INC.



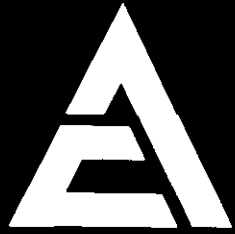
T. D. Whitaker
Sales Manager

TDW:ci

Enc.

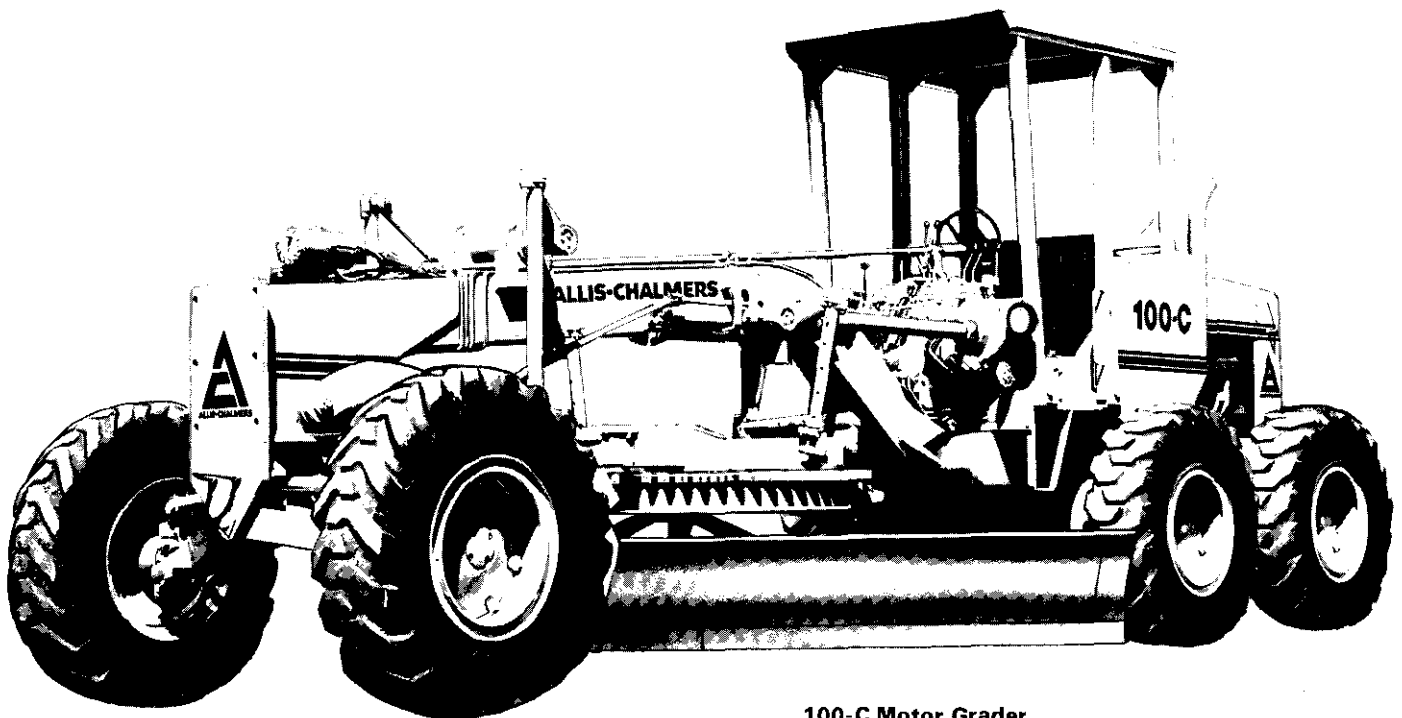
ACCEPTED:

James R. Jordan



ALLIS-CHALMERS

L VOL 002 PAGE 379



100-C Motor Grader

Illustration includes optional hydraulic scarifier, hydraulic blade pitch control and ROPS canopy.

130 Flywheel H.P.

ALLIS-CHALMERS MODEL 11000 DIESEL ENGINE — Turbocharged

OPERATING WEIGHT, as illustrated (w/out operator) — 29,587 lbs. (13,418 Kg)

PRECISION — High-production ROLL-AWAY moldboard.

STRONG — Heavy duty truss type front axle. Equal weight distribution design gives long service life.

POWER OIL CLUTCH — Multiple disc.

ACCURATE, DEPENDABLE — Power steering, 4-wheel power brakes.

BIG STRONG CIRCLE — A forged, seamless ring, rolled T-section. . . provides greater blade stability for precision grading.

CONTROLS — Hydraulic for operating ease with positive blade control. Hydraulic wheel lean.

WIDE SELECTION — of equipment, including rear mounted ripper, complete line of snow removal equipment, cable layer, compaction cutter, ROPS cab and canopy, and hydraulic scarifier.

WEIGHT, BASIC OPERATING (approx.)

Std. unit with operator and full fuel tank.
 On front wheels 8,020 lbs. (3.637 Kg.)
 On rear wheels 19,155 lbs. (8.687 Kg.)
 Total 27,175 lbs. (12.315 Kg.)

ENGINE

Make and model Allis-Chalmers 11000
 Maximum engine hp 210
 Rated engine hp 142
 Net flywheel hp* 130 @ 1800 rpm
 NACC horsepower rating 47.3
 Bore and stroke

..... 4-7/16" x 5-9/16" (112 x 141 mm)

Piston displacement 516 cu. in. (8455 cm³)

Lubrication full pressure

Six cylinder four cycle, turbocharged. Dry-type (305 mm) 12" air cleaner. Full flow oil and fuel filters. Mechanical governor. 24-volt, direct electric starting.

*Net flywheel horsepower: Horsepower available at the flywheel of the vehicle engine under SAE J816a conditions of 85°F (29°C) and 29.38" (746 mm) Hg. after deductions have been made for fan, alternator, lube oil pump, water pump, air cleaner and fuel pump. This vehicle may be operated up to 12000 ft. (3657 m) altitude without derating the engine.

CLUTCH

Oil-type, three-disc, power-boosted.

TRANSMISSION

Constant mesh with helical gears; pressure lubricated. U-joint connected clutch and transmission for service ease.

SPEEDS

Gear	1st	2nd	3rd	4th	5th	6th
MPH	2.7	3.9	5.9	8.3	12.0	20.0
Km/h (4.3)	(6.2)	(9.4)	(13.3)	(19.3)	(32.1)	

Gear	1st Rev.	2nd Rev.	3rd Rev.
MPH	3.2	4.6	7.5
Km/h	(5.1)	(7.4)	(12.0)

Accelerator-decelerator pedal provides wide range of speeds. Grader can be throttled down under governor control, to 65% of these rated speeds without loss of rim pull.

CONTROLS — Hydraulic actuation

MOLDBOARD

ROLL-AWAY, involute curve with replaceable cutting edges and end bits.

Size

..... 12' x 24" x 3/4" (3.65 m x 610 mm x 19 mm)

Blade pressure 14,500 lbs. (6.577 Kg)

with scarifier 16,000 lbs. (7.257 Kg)

Lift above ground 17-1/2" (444 mm)

MOLDBOARD (Cont'd)

Max. side shift 49" R (1245 mm)

43" L (1092 mm)

Shift on moldboard arms 27" R (685 mm)

21" L (533 mm)

Pitch positions 9

Bank cutting angle 90°

Reach outside rear wheels 92" R (2337 mm)

86" L (2184 mm)

Side shift enclosed and running in oil.

ROLL-AWAY is an Allis-Chalmers trademark.

LIFTING MECHANISM

Type Enclosed worm and gears running in oil

Dia. lift shafts 3-1/4" (82 mm)

Crank rotation 308°

Length of lift cranks 14" (355 mm)

Lift link dia. 1-7/8" (47 mm)

Lift link connections Ball and socket, shim-adjustable

Lifting speed 2.27 in. per sec. (57.6 mm)

CIRCLE

Outside diameter 69" (1753 mm)

One-piece, rolled T-section

..... 7" x 6-5/8" x 1-1/2" (177 x 168 x 38 mm)

Degrees turn 360°

Circle turn gears enclosed and running in oil.

Total wear plate area 323 sq. in. (2.083 cm²)

DRAWBAR

Type welded box, T-shape

Size, main box 7" H x 6-3/4" W (177 x 171 mm)

Connection shim-adjustable ball and socket

FRAME

* Welded box 10" x 11-1/4" (254 x 285 mm)

Minimum wt. 115 lbs./ft. (17.1 Kg/m)

Maximum wt. 424 lbs./ft. (630 Kg/m)

Average wt. 210 lbs./ft. (302 Kg/m)

*Special Rolled Sections

AXLE - FRONT

Hi-arch, welded steel truss type. Heavy duty spindles are shim-adjustable. Wheel lean 16-1/2 degrees right and left; hydraulically operated. Clearance at centerline 26-1/2" (673 mm)

STEERING

Type Full Power

Ratio 14 to 1

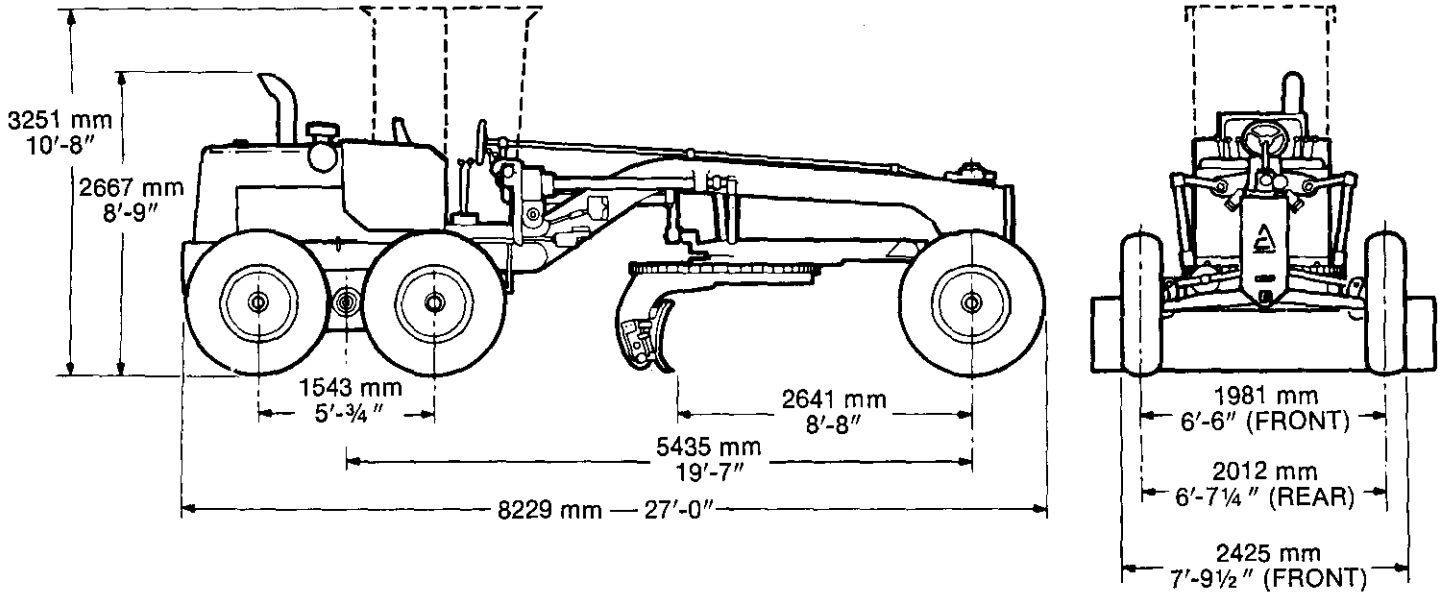
Turning radius 38' (11 582 mm)

AXLE - REAR

Rigid, heat-treated steel with tapered roller bearings.

Diameter at bearings 4-1/2" (114 mm)

DIMENSIONS



BRAKES

Self-adjusting, four-wheel power brakes. Diameter (431 mm) 17"; width (101 mm) 4". Expanding shoe hand brake, mounted on transmission bottom shaft.

CAPACITIES

	Lit.	Gals.
Fuel tank	265.	70
Cooling system	34	9
Crankcase (and clutch).....	15,1	4
Transmission	15,1	4
Tandem housings, each.....	30,2	8
Hydraulic system.....	60,6	16

TANDEM DRIVE HOUSING

Welded box section, (15,8 mm) 5/8" thick walls, (50 mm) 2" pitch roller chain, interchangeable axles and sprockets, mounted on tapered roller bearings.

WHEELS AND TIRES

Heavy-duty, demountable rims with six 13:00 x 24 (10 PR) tubeless tires.

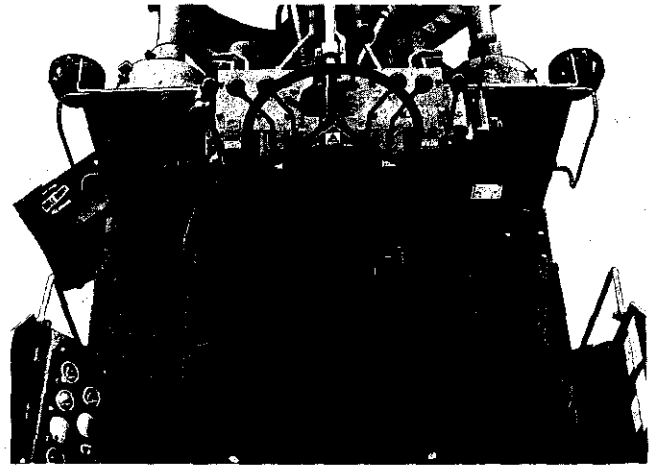
OPTIONAL TIRES (TUBELESS)

- 13:00 x 24 — 12 PR*
- 14:00 x 24 — 10 PR*
- 14:00 x 24 — 12 PR* (OPT. 10" width rim available)
- 17:50 x 25 — 12 PR

*Tube type also available.

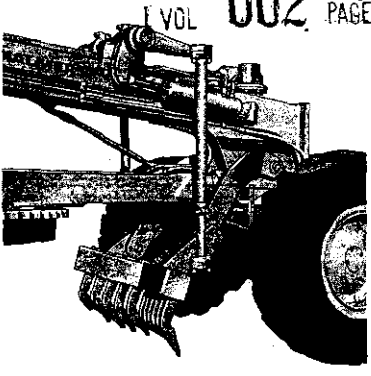
OPERATOR'S COMPARTMENT

Flat platform (1480 mm x 803 mm) 58-3/8" x 31-3/4" Adjustable single place foam seat with back rest and swing-up arm rests. Direct 24-volt electric push button starting.

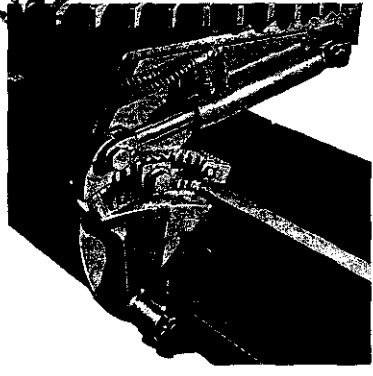


STANDARD EQUIPMENT

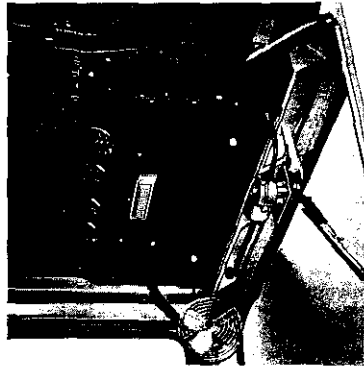
- Includes power steering
- Self-adjusting four rear wheel power brakes
- Three-disc power oil clutch
- Direct electric starting
- 24-volt electric system
- 2 red stop and tail lights
- Horn
- Adjustable seat
- Foot accelerator-decelerator
- 12 ft. (3658 mm) manual shiftable moldboard - interchangeable end bits
- Six 13:00 x 24 (10 PR) tubeless tires
- Rear bumper
- Dry-type air cleaner with safety element and service indicator
- Hour meter
- 40 amp alternator
- Hydraulic controls
- Mechanical parking brake
- Anti-freeze
- Hydraulic wheel lean
- ROPS mounting brackets
- Gauges: engine and transmission oil pressure, engine temperature, ammeter.



Hydraulic Scarifier



Hydraulic Blade Pitch Control



Air Conditioner



Allis-Chalmers ROPS Cab

OPTIONAL EQUIPMENT AND ATTACHMENTS

CAB (ROPS)

Weight 1600 Lbs (726 Kg)
 Height (Inside) 6' 5-1/4" (1959 mm)
 (Outside) 6' 7" (2006 mm)
 Windshield - w/wipers and safety glass
 (Front & Rear) One piece adjustable
 Air Conditioning 18000 BTU/hour @ 90°F
 -60% humidity, 400 cfm
 @ 1800 engine RPM

CANOPY (ROPS)

Weight 977 LBS (443 Kg)
 Height (Outside) 6' 6-1/2" (1994 mm)

CONTROLS

Mechanical Actuation Less 130 Lbs. (59 Kg)
 Special Hyd. Valves Simple add-on for rippers,
 etc.

ELECTRICAL

Alternator 50 amp.
 Lights 2 Headlights, 2 dashlights,
 1 rear floodlight

ENGINE

Air Intake Under Hood
 Air Cleaner Stack Extension
 Lube and Fuel Filters Severe Service
 Muffler
 Hood Side Plates
 Starting Fluid Primer

MOLDBOARD

Hydraulic Shifttable 12' x 7/8" (3658 x 22 mm)
 (or mechanically shifttable) 13' x 7/8" (3963 x 22 mm)
 14' x 7/8" (4268 x 22 mm)
 Extensions Right or Left (12' only) 2' (610 mm)
 Hydraulic Pitch 9-7/8" Stroke (251 mm)
 Rock Bits Right or Left

PULL HOOKS Front and Rear

SCARIFIER

Weight 1300 Lbs (589 Kg)
 Width of swath 46" (1168 mm)
 Number of Teeth 11
 Tooth Spacing 4-1/2" (114 mm)
 Lift Above Ground 12" (305 mm)
 Number of Pitch Positions 4
 Ground Pressure 11000 Lbs. (4989 Kg)
 Power Lift Control Hydraulic

SEAT BELTS (Mandatory with ROPS)

STEERING Adjustable Steering Wheel

TIRES Various tube or tubeless —

TOOLS (Kit) Tube and Lug
 Wrenches, Grease Gun,
 Other for Maintenance
 and Simple Repairs

VANDALISM PROTECTION Various Padlocks and
 Covers

The information contained herein is general in nature and is not intended for specific application purposes. Allis-Chalmers reserves the right to make changes in specifications shown herein or add improvements at any time without notice or obligation. Illustrations show standard and optional items.



**GULF STATES UTILITIES COMPANY**

POST OFFICE BOX 2951 • BEAUMONT, TEXAS 77704

AREA CODE 713 838-6631

June 4, 1974

The Honorable Tom D. Mann
County Judge, Tyler County
100 Tyler County Courthouse
Woodville, Texas 75979

Dear Judge Mann:

RE: Utility Adjustment Control No. 2782-1, F.M.
Highway No. 1632, Tyler County

As requested by Mr. F. C. Young, District Engineer with the Texas Highway Department, we have prepared plans for relocating our facilities along the new proposed route of F.M. Road No. 1632.

Enclosed are the original and four (4) copies of the Texas Highway Department's Affidavit Form DS-15-U1 and copies of Easement No. 93.25, 88.78 and 88.103, showing information relative to interest in the land occupied by our transmission and distribution circuits. Also attached are the original and four (4) copies of the Texas Highway Department's Affidavit of Estimated Cost Form DS-15-45 for relocating Structure #24 in 34.5KV Line #134 and for relocating one intermediate Structure #802-A in 34.5KV Line #68 which also has a 7.6KV one phase distribution underbuild system on it. We have eleven additional poles located within the boundaries of the new right of way to move; however, these poles do not qualify for reimbursement. Attached is Gulf States' estimate J.O. No. 14-53148, Exhibit A. This estimate includes the cost of relocating the two structures in the 34.5KV lines. And also attached to the estimate are prints for the proposed work to be done.

This estimate was prepared using the Texas Highway Department's guide lines for fifty-fifty reimbursable projects. The reimbursement for relocating these facilities is to be on a lump sum basis. The total estimated cost to Tyler County for relocating the two 34.5KV structures with the 7.6KV distribution underbuild is \$1,715.87. We plan to use Gulf States Utilities Company's crews to perform this work.

The Honorable Tom D. Mann

- 2 -

June 4, 1974

The Permit Form D-15-24A, granting the County and State permission to cross and encroach on that portion of right of way that Gulf States Utilities Company has an interest, will be executed at the time of final billing. If at this time; however, there are additional forms to be prepared by us, please advise us.

If you are in agreement with the lump sum cost figure and the plans attached, please send us a letter of confirmation.

Very truly yours,



A. W. Baird
Operating Superintendent
Beaumont Division

BBJ:cm
Enclosures

cc: Mr. F. C. Young
District Engineer
Texas Highway Department
P.O. Box 3458
Beaumont, Texas 77704

Mr. James Skinner
Utility Engineer
Texas Highway Department
P.O. Box 3458
Beaumont, Texas 77704

Mr. A. J. Cortez
Resident Engineer
Texas Highway Department
P.O. Box 656
Woodville, Texas 75979

AFFIDAVIT OF ESTIMATED COST

1 VOL 002 PAGE 385

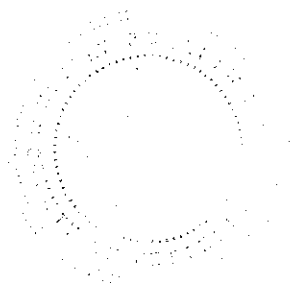
This constitutes the estimate of cost of a utility adjustment, removal or relocation work to be performed in conjunction with the highway improvement project in Tyler County, Project No. RW 2782-1, on Highway #1632 at Highway Stationing 165 + 85 & 264 + 10.

I, S. L. Adams, certify that having knowledge of the facts in respect to the attached estimate in the amount of \$ 1,715.87 that all items of estimated cost appearing thereon do not exceed current costs for like items listed and, to the best of my knowledge, includes only those items eligible for reimbursement under State statutes and Highway Commission Policy and that amounts deducted from the gross estimated cost due to increase in value of the new utility and salvage values to be derived from the old utility represent a true and accurate estimate of such values. I further certify that these estimated costs, charges and credits have been developed following the general provisions of regulations governing reimbursement for utility adjustments on Federal Aid Utility Projects and that any percentage factors indicated are percentages as are used by the utility in its normal operations.

Signed S. L. Adams
Title General President
Company GULF STATES UTILITIES COMPANY

Sworn to and subscribed before me this 7th day of June,
A.D. 19 74.

Mary E. Schlicher
Notary Public in and for _____
Jefferson County, Texas.



(STEP #1 - RELOCATE ONE STRUCTURE IN 34KV LINE #134),
(STEP #2 - RELOCATE ONE STRUCTURE IN 34KV LINE #68
AND A 7.6KV DISTRIBUTION UNDERBUILD) DUE
TO THE PROPOSED IMPROVEMENTS OF FM #1632
WEST OF DOUCETTE, TEXAS, TYLER COUNTY

STATE HIGHWAY CONTROL NO. 2782-1
FEDERAL PROJECT NO. S-3315
TYLER COUNTY, F.M. HIGHWAY #1632

GULF STATES UTILITIES COMPANY
J.O. #14-53148

SUMMARY OF ESTIMATED COST OF EXHIBIT "A"

TOTAL ESTIMATED COST OF NEW CONSTRUCTION	\$ 1,860.61
TOTAL ESTIMATED COST OF REMOVAL	195.51
TOTAL ESTIMATED SALVAGE VALUE	<u>-340.25</u>
TOTAL ESTIMATED REIMBURSEMENT COST-OF THIS PROJECT	\$1,715.87

NOTE: This estimate is based on performing
this work with the 34KV lines and the
7.6KV feeder energized.

EXHIBIT A

GENERAL

VOL. 002 PAGE 387

The method of construction, as shown on the accompanying estimates and plans, represents the most economical means of accomplishing this work.

The work herein described is to be performed by Gulf States Utilities Company either by its own forces or under an existing continuing contract by which certain work is regularly performed for us, and by which the lowest available costs are developed.

Replacement in kind, grade, and class without betterments, the exceptions being additional pole height and pole class, the two 34KV circuits shall conform to Gulf States Utility Company's Specification Book #345 which deals with voltages from 19.9KV/34.5KV. The old 34KV construction which is to be removed was built in accordance with Specification Book #99 which is no longer in use for new construction. Any differences in material cost is due to this fact. The salvage values in this estimate are the actual value of items of material which are being returned to our Storeroom.

The percentages used for Administrative and Accounting, Engineering and Supervision, Contingencies and Fringe Benefits are taken from a Gulf States Utilities Company memorandum dated May 14, 1973, entitled "Electric Department Work Order Estimating Forms and Damage Multipliers - June, 1973 - June 1974". Copies of this memorandum will be supplied when requested for use in checking Highway Relocation Estimates.

DESCRIPTION OF WORK. J.O. #14-53148

Step #1

34KV Line #134
(Pole #24)

NEW - Install 1-50' CL #2 pole and contact with 34.5KV circuit. Frame pole in accordance with Specification Book #345.

34KV Line #134
(Pole #24)

OLD - Remove 1-45' CL #2 pole which is framed in accordance with Specification Book #345.

Step #2

34KV Line #68 with
Doucette's 7.6KV 1Ø
Feeder #22 underbuild
(Intermediate Pole #802-A)

NEW - Install 1-50' CL #2 pole and contact. Frame 34.5KV circuit in accordance with Specification Book #345. Frame 7.6KV one phase distribution circuit in accordance with Specification Book #98.

OLD - Remove 1-40' CL #3 pole which has a bayonet pole top extension. 34.5KV circuit is framed in accordance with old Specification Book #99. The 7.6KV distribution underbuild is framed in accordance with Specification Book #98.

EXHIBIT "A"

VOL 002 PAGE 383

ESTIMATED COST OF RELOCATING
TWO STRUCTURES FROM THE
NEW PROPOSED R.O.W. OF F.M. #1632
WEST OF DOUCETTE, TEXAS
GULF STATES UTILITIES CO. JOB ORDER NO. 14-53148
STATES HIGHWAY CONTROL NO. 2782-1
FEDERAL PROJECT NO. S-3315
TYLER COUNTY

LAND AND R.O.W. WORK ORDERS

(1) PAYROLL - 4 MAN SURVEY CREW 4 Hrs. X \$21.75 Per Hr.	=	87.00
(2) PAYROLL - 1 LAND MAN 2 Hrs. X \$7.50 Per Hr.	=	15.00
(3) TRANSPORTATION - SURVEY TRUCK 4 Hrs. X \$1.30 Per Hr.	=	5.20
SUB TOTAL A		<u>\$107.20</u>
(C-1) ADMINISTRATIVE AND ACCOUNTING 3% of \$107.20	=	3.22
(C-2) ENGINEERING AND SUPERVISION 17% of \$107.20	=	18.22
CONTINGENCIES 5% of \$107.20	=	5.36
SUB TOTAL B		<u>\$26.80</u>
NON-PRODUCTIVE PAYROLL 13.16% of \$122.56	=	16.13
RET., THRIFT & INS. BENEFITS 16.97% of \$122.56	=	20.80
MISC. BENEFITS 0.84% of \$122.56	=	1.03
SUB TOTAL C		<u>\$37.96</u>
A+B+C IS GRAND TOTAL D		<u>\$171.96</u>

INSTALLATION WORK ORDERS

(1) MATERIAL - STORES ISSUE - STOREROOM COST	=	336.87
(2) HANDLING COST 8% of \$336.87	=	26.95
(3) LABOR INSTALLING 6 MAN CREW 14 Hrs. X \$33.03 Per Hr.	=	462.42
(4) LABOR TRANSFERRING 6 MAN CREW 6 Hrs. X \$33.03 Per Hr.	=	198.18
(5) TRANSPORTATION - LINE TRUCK 20 Hrs. X \$3.58 Per Hr.	=	71.60
(6) POLE HAULING - CONTRACT 4 Hrs. X \$8.18 Per Hr.	=	32.72
SUB TOTAL E		<u>\$1128.74</u>
(C-1) ADMINISTRATIVE & ACCOUNTING 3% X \$1128.74	=	33.86
(C-2) ENGINEERING & SUPERVISION 17% X \$1128.74	=	191.89
CONTINGENCIES 5% X \$1128.74	=	56.44
SUB TOTAL F		<u>\$282.19</u>
NON-PRODUCTIVE PAYROLL 13.16 % of \$896.75	=	118.01
RET., THRIFT & INS. BENEFITS 16.97% of \$896.75	=	152.18
MISC. BENEFITS 0.84% of \$896.75	=	7.53
SUB TOTAL G		<u>\$277.72</u>
E+F+G IS GRAND TOTAL H		<u>\$1688.65</u>

REMOVAL WORK ORDER

VOL 002 PAGE 389

(1) MATERIAL - STORES RETURNS - GOOD STOREROOM COST - CREDIT	=	329.37
(2) MATERIAL - STORES RETURNS - JUNK ACTUAL VALUE - CREDIT	=	10.88
TOTAL SALVAGE CREDITS I	=	<u>-340.25</u>
(3) LABOR REMOVING 6 MAN CREW 4 Hrs. X \$33.03 Per Hr.	=	132.12
(4) TRANSPORTATION LINE TRUCK 4 Hrs. X \$3.58 Per Hr.	=	14.32
SUB TOTAL J	=	<u>\$146.44</u>
CONTINGENCIES 5% of \$146.44	=	7.32
SUB TOTAL K	=	<u>\$7.32</u>
NON-PRODUCTIVE PAYROLL 13.16% of \$134.84	=	17.74
RET., THRIFT & INS. BENEFITS 16.97% of \$134.84	=	22.88
MISC. BENEFITS 0.84% of \$134.84	=	1.13
SUB TOTAL L	=	<u>\$41.75</u>
-I+J+K+L IS GRAND TOTAL M	=	-\$144.74
GRAND TOTAL OF REIMBURSEMENT IS D+H-M	=	\$1715.87

GSU2133.0-11-66

INSTALLATION OF
 MATERIAL WITHOUT REETTERMENT

Page 2 of 2

MATERIAL TO BE REMOVED

#802-A

NO.	QTY.	MATERIAL	UNIT COST	TOTAL	NO.	QTY.	MATERIAL	UNIT COST	TOTAL
#24	1	50' CL #2 pole	81.55	81.55	#24	1	45' CL #2 pole (set 1958)	67.92	67.92
	1	10' X-arm assy./W 72" braces	13.25	13.25		1	10' X-arm assy./W 72" brace	13.25	13.25
	3	20/34KV Pin tang. assy.	5.07	15.21		3	20/34KV Pin tang. assy.	5.07	15.21
	1	Static attachment	2.85	2.85		1	Static attachment	2.85	2.85
	1	Pole ground assy.	5.78	5.78		1	Pole ground assy.	5.78	5.78
	3	#1/0 Armour rods	1.36	4.08		3	#1/0 armour rods	1.36	4.08
	1/2	Lb. #4 AL tie wire	.42	.21		1/2	Lb. #4 AL tie wire (junk)	.28	.14
		SUB TOTAL		122.93			SUB TOTAL		109.23
802-A					802-A				
	1	50' Pole CL #2	81.55	81.55		1	40' CL #3 Pole (No Date)	59.93	59.93
	1	Static attachment & clamp	5.18	5.18		1	Pole bayonet assy.	6.45	6.45
	1	Gr. lead stand-off brkt.	5.92	5.92		1	Static attachment & clamp	5.18	5.18
	1	10' X-arm assy./W 72" braces	13.25	13.25		1	Gr. lead stand-off brkt.	5.92	5.92
	3	20/34KV Pin tang. assy.	5.07	15.21		1	Set pole steps	2.25	2.25
	3	#1/0 Armour rods	1.36	4.08		1	12' X-arm assy.	15.81	15.81
	1	9' Single X-arm assy.	7.68	7.68		3	34KV pin tang. assy.	6.30	18.90
	3	7.6KV Pin tang. assy.	1.79	5.37		1	9' Double X-arm assy.	16.54	16.54
	3	Neut pin tang assy.	1.40	4.20		1	9' Single X-arm assy.	7.68	7.68
	1	9' Double X-arm assy.	16.54	16.54		2	7.6KV Dead end assy. #4 cu	8.53	17.06
	2	#2 Armour rods (double)	.90	1.80		1	Eye Bolt & eye nut neut. DE	3.08	3.08
	1	Comb cut-out & arrester	27.61	27.61		1	7.6KV Pin tang assy.	1.79	1.79
	1	25 Amp fuse link	.67	.67		1	Neut. Pin tang assy.	1.40	1.40
	1	Pole ground	5.78	5.78		1	Comb. cut-out & arrester	27.61	27.61
	1	Span guy assy.	8.46	8.46		1	100 AMP cut-out	19.48	19.48
	1/2	Lb. #4 AL tie wire	.42	.21		2	25 AMP fuse links	.67	1.34
	10	Lb. #4 CU tie wire	.76	7.60		1	Pole ground assy.	5.78	5.78
	5	#2 Ampact connectors	.33	1.65		3	#1/0 Armour Rod	1.36	4.08
	3	#4 CU vise type conn.	.34	1.02		1/2	Lb. #4 AL tie wire (Junk)	.28	.14
	4	AL pole numbers	.04	.16		10	Lb. #4 cu tie wire (Junk)	1.06	10.60
		SUB TOTAL		213.94			SUB TOTAL		231.02
		GRAND TOTAL MATERIAL		336.87			GRAND TOTAL MATERIAL		340.25

VOL 002 PAGE 350

The State of Texas)
)
County of Jefferson)

COUNTY TYLER

PROJECT 2782-1

HIGHWAY F.M. #1632

ACCT. NO. _____
(To be filled in by Highway Department)

A F F I D A V I T

Exhibit "B"

WHEREAS, The State of Texas, acting by and through the Texas State Highway Department, hereinafter called the STATE, has deemed it necessary to make certain improvements on Highway F.M. #1632 in Tyler County, from end of existing black top Sta. #114 + 87.31 to Highway #69 at Doucette, Texas, Sta. #274 + 39.45, and

WHEREAS, It is anticipated that the above referred to improvements will affect the facilities of GULF STATES UTILITIES COMPANY hereinafter called the OWNER, at the following described locations:

This affidavit covers the owner's interest in the land occupied by its:

- (1) 34KV Line #134, Structure #24 at Highway Sta. #165 + 85.
- (2) 34KV Line #68, intermediate Structure #802-A with 7.6KV 1Ø distribution underbuild at Highway Sta. #264 + 10 located within the limits of the proposed F.M. Highway #1632.

Attached are copies of easement #93.25 covering Line #134 and easement #88.78 and #88.103 covering Line #68.

WHEREAS, The STATE has requested that the OWNER furnish to the STATE information relative to interests that owner holds in lands at each of the above indicated locations.

NOW THEREFORE before me, the undersigned authority, this day personally appeared D. L. Adams who, after being by me duly sworn, did depose and say:

That he is Senior Vice President of GULF STATES UTILITIES COMPANY and, as such, has knowledge of the facts contained herein, and

That, to the best of his knowledge, said OWNER is the owner of the following described interests in the above indicated lands, copies of the instruments under which said OWNER claims said interests being attached hereto and made a part hereof:

S L Adams
Signed

Title: Senior Vice President

Company: GULF STATES UTILITIES COMPANY

Sworn to and subscribed before me this 7th day of June A.D. 1974

Mary F. Schlicher
Notary Public in and for
Jefferson County, Texas



RIGHT OF WAY EASEMENT

THE STATE OF TEXAS)
 :
 COUNTY OF TYLER)

KNOW ALL MEN BY THESE PRESENTS:

That THE LONG-BELL LUMBER COMPANY, a corporation existing under the laws of the State of Missouri, for and in consideration of Ten Dollars and other valuable consideration to it paid by the GULF STATES UTILITIES COMPANY, a corporation duly incorporated and existing under the laws of the State of Texas, the receipt of which is hereby acknowledged, has granted, sold and conveyed and by these presents does grant, sell and convey unto the said GULF STATES UTILITIES COMPANY, its successors and assigns, the RIGHT, PRIVILEGE AND EASEMENT to enter upon and to erect, construct, maintain, operate, inspect, replace, repair, patrol, and remove one or more lines of wood or metal structures, which may be erected simultaneously or at some future time, with lines of wire, crossarms, guy wires, conduits, stubs and other usual fixtures for the transportation of electricity, and grantees communications, together with all necessary foundations, anchors and braces to properly support the same upon, over and across the following described tracts or parcels of land situated in Tyler County, Texas, to-wit:

A strip of land 125 feet in width over and across part of the E. J. Hanks Survey, State Abstract No. 20, and part of the Ira Taylor Survey, State Abstract No. 637, said strip lying 62 & 5/10 feet on each side of center line described as beginning on the East line of tract on the E. J. Hanks Survey described as Lot One of the A. E. Cooper Estate in Book "A" at page 452 of the Deed Records of Tyler County, Texas, at a point 2417 & 5/10 feet North of the Southwest corner of the Robert Lucas Survey, and running thence West parallel with and 37 & 5/10 feet South of center line of right-of-way described as "Easement No. C-2" in deed from the grantor herein to the grantee herein dated July 24, 1930, recorded in Book 64 at page 526 of the Deed Records of said County, the distance of 11,109 feet more or less to a point on the West line of the Ira Taylor Survey located 3393 & 5/10 feet North of the Southwest corner of said Taylor Survey, but excepting from this description and this conveyance all those parts of said strip of land on the Ira Taylor Survey lying within the 44.21 acre tract conveyed by the grantor herein to Rufus Franks by deed dated October 6, 1938 and the 19.42 acre tract conveyed by the grantor herein to Douglas Frazier by deed dated October 6, 1938.

It is understood and agreed that the present electric power line located on the property of the grantor in the 125-Foot Right-of-Way above described will remain in place by virtue of the Easement rights herein granted, and this Easement will cancel and supersede all rights of the grantee under the Easement granted to the Gulf States Utilities Company by The Long-Bell Lumber Company dated July 24, 1930, and recorded in Vol. 64, Page 526, in the Deed Records of Tyler County, Texas.

And said The Long-Bell Lumber Company does hereby grant unto said Gulf States Utilities Company, its successors and assigns, the right at any time and all times, upon payment of the reasonable value thereof and the reasonable damage resulting therefrom, to trim or remove such trees and underbrush or other obstructions upon or adjacent to the land lying on each side of said center lines as in the judgment of said Gulf States Utilities Company would interfere with or endanger said lines or the operation thereof.

All rights hereby conferred are subject to the rights of other parties and the public under and by virtue of all existing telephone, telegraph and electric lines, roads, rights of way and other easements, and the grantor hereby expressly reserves unto itself, its successors and assigns, the right to use the strips of land hereinabove described

TRACT 346
 EASEMENT 93.25

for any purpose and in any way which will not unreasonably interfere with the use thereof by grantee, including the right to cross the same with telephone, telegraph, or electric lines, roads, railroads, pipe lines and other facilities.

TO HAVE AND TO HOLD the rights and privileges hereby granted to said grantee, subject to the conditions and stipulations hereinabove set forth, for as long as said rights of way shall be used for the transmission of electrical energy or for communication purposes; but it is expressly provided and made a condition hereof that if said rights of way or any thereof ceases to be so used for any consecutive period of two years, the same shall immediately revert to and title thereto revert in the grantor herein, its successors or assigns, without notice and without judicial ascertainment.

IN TESTIMONY WHEREOF, The Long-Bell Lumber Company has caused this instrument to be executed by its proper officers this 14th day of November, 1950.

ATTEST:
Bob Ellis
Secretary

THE LONG-BELL LUMBER COMPANY
By L. C. Stith
Vice-President

APPROVED
BY: [Signature]
NOTARY

STATE OF MISSOURI)
COUNTY OF JACKSON)

Before me, Lee Hopkins, a Notary Public in and for the said County and State, on this day personally appeared L. C. Stith, Vice-President of The Long-Bell Lumber Company, known to me to be the person whose name is subscribed to the foregoing instrument, and acknowledged to me that he executed the same for the purposes and consideration therein expressed and in the capacity therein stated, as the act and deed of The Long-Bell Lumber Company.

GIVEN UNDER MY HAND AND SEAL OF OFFICE this 14th day of November, 1950.

Lee Hopkins
Notary Public, Jackson County, Missouri

My commission expires
March 15, 1954

APPROVED AS TO FORM
GEO. W. BELL & TUCKER
by /s/ Major T. Bell

STATE OF TEXAS)
COUNTY OF TARRANT)
I HEREBY CERTIFY that the foregoing instrument was duly recorded on this 13th day of December, 1950, at 2:57 p.m. in my office at Dallas, Texas, and that the same is a true and correct copy of the original as the same is on file in my office.
17 Dec. 1950

Cress Daniels
Clerk, County Court, Tarrant County, Texas
[Signature]
Deputy



RIGHT OF WAY EASEMENT

THE STATE OF TEXAS

COUNTY OF TYLER

Know All Men By These Presents:

VOL 002 PAGE 395

That: J. Miller Hawthorne and wife, Robert Evie Hawthorne

of the County of Tyler, state of Texas, for and in consideration of

Two hundred forty-five and 79/100 - - - - - (\$245.79) - - - - - Dollars to me (us) in hand paid by the GULF STATES UTILITIES COMPANY, a corporation duly incorporated and existing under the laws of the State of Texas, the receipt of which is hereby acknowledged, have granted, sold and conveyed, and by these presents do grant, sell and convey unto the said GULF STATES UTILITIES COMPANY, its successors and assigns, the RIGHT, PRIVILEGE AND EASEMENT to enter upon and to erect, construct, maintain, operate, inspect, replace, repair, patrol, and remove one or more lines of wood or metal structures, which may be erected simultaneously or at some future time, with lines of wire, crossarms, guy wires, conduits, stubs and other usual fixtures for the transportation of electricity, and grantees communications, together with all necessary foundations, anchors and braces to properly support the same upon, over and across the certain tract or parcel of land owned by the undersigned,

situated in the E. F. Hanks 1-20 Survey, in Tyler County,

Texas, fully described in Vol. 107, Page 33, Deed Records of Tyler

County, Texas, to which reference is hereby made for description.

Said strip of land over which this easement is granted being 62.5 feet on each side of the following described line, and continuations or projections thereof, insofar as same may be embraced within the boundaries of the above described tract, said line being more particularly described as follows:

Entering this tract of land at a point in the South boundary thereof and the North right-of-way line of the graded road, said point of beginning being located 636.5 feet Easterly from the Southwest corner of this tract of land;

Thence, N 4°-43' W 1352 feet, upon, over and across this tract of land, crossing the North boundary thereof and the South boundary of property owned by J. P. Shepherd, at a point of ending located 332.5 feet from the Northwest corner of this tract of land.

The centerline of the above described right-of-way is located 37.5 feet East of the centerline of the existing electric power line on this tract of land.

It is understood and agreed that the present electric power line located on the property of the grantor in the 125-foot right-of-way above described will remain in place by virtue of the Easement rights herein granted, and this Easement will cancel and supersede all rights of the grantee under the Easement granted to the Gulf States Utilities Company by J. F. Shepherd et ux, dated June 17, 1930, and recorded in Volume 64, Page 511, of the Deed Records of Tyler County, Texas.

And I (we) do hereby grant unto the said GULF STATES UTILITIES COMPANY, its successors and assigns, the right at any time and all times to trim, cut or remove such trees and underbrush upon the land lying within the above described easement; and to trim, cut or remove all dead, weak or dangerously leaning trees which are near or adjacent to said easement, as, in the judgment of said Company, might interfere with or endanger said line, or the operation thereof.

Grantor, for himself and for his heirs and assigns, retains the right to use for their own purposes all land under or adjacent to said electric line so long as such use does not interfere with the easement and rights herein given or conveyed. However, neither the grantor nor the grantor's heirs or assigns, will erect, locate, or permit the erection or location of, any structure or object, of any type or material, within a distance of 62.5 feet from said center line above described; but they may fence any or all of said land, in which event the GULF STATES UTILITIES COMPANY, its contractors and its successors and assigns shall have ingress and egress at any and all times to said land.

Damage to merchantable timber, improvements and growing crops in the construction, operation and maintenance of said electric lines shall be paid by grantee.

To Have and to Hold the above granted rights and easements, together with all and singular, the privileges and appurtenances thereto in anywise belonging unto the said GULF STATES UTILITIES COMPANY, its successors and assigns for so long as said line may be maintained or operated thereon.

And I (we) hereby covenant with said GULF STATES UTILITIES COMPANY, that I (we) have title to said land, and have the right to grant the privileges herein contained.

Witness my (our) hand..... at Rockville, Tex. this 11th day of October, A. D. 1950.

J. Miller Hawthorne
Robert Evie Hawthorne

APPROVED AS TO FORM
ORGAIN, BELL & TUCKER
By /s/ Major T. Bell

TRACT 110
EASEMENT 88.78

SINGLE ACKNOWLEDGMENT

EXCEL 002 FILE 396

State of Texas,
County of _____

Before me, the undersigned authority in and for said State and County, on this day personally appeared

known to me to be the person... whose..... is subscribed to the above and foregoing instrument, and acknowledged to me thathe..... executed the same for the purposes and consideration therein expressed.

Given under my hand and seal of office this..... day of..... A. D. 19.....

Notary Public in and for..... County, Texas

JOINT ACKNOWLEDGMENT

State of Texas, TYLER
County of _____

Before me, the undersigned authority in and for said State and County, on this day personally appeared
J. Miller Hawthorne, and wife Robert Evie Hawthorne

known to me to be the persons whose names are subscribed to the foregoing instrument, and acknowledged to me that they executed the same for the purposes and consideration therein expressed; and the said Robert Evie Hawthorne wife of said J. Miller Hawthorne, having been examined by me privily and apart from her husband, and having the same fully explained to her, she, the said Robert Evie Hawthorne acknowledged said instrument to be her act and deed and declared that she had willingly signed the same for the purposes and consideration therein expressed, and that she did not wish to retract it.

Given under my hand and seal of office this the 11th day of October A. D. 19 50

[Signature]

Notary Public in and for Tyler County, Texas

178/9 / 6-1-9 / 225
Tract No. 110

J. MILLER HAWTHORNE ET UX

TO

Gulf States Utilities Company

EASEMENT

10-11-50

I, _____, County Clerk in and for said County, hereby certify that the foregoing instrument of writing was filed in my office for record on the _____ day of _____, 19____, at _____ o'clock _____ M., and duly recorded by me on the 11th day of _____, 19____, in Book 138 Records of Deeds of said County, at page 219.
Given under my hand and seal of office the day and year last above written.
County Clerk _____ County, Texas
By: *[Signature]* Deputy

No. 88.78
69 KV LINE #88
TRACT WT-WOODVILLE SECTION "C"
REQ # E 679

APPROVED AS TO FORM
ORGAIN, BELL & TUCKER
By: _____

RIGHT OF WAY EASEMENT

THE STATE OF TEXAS

COUNTY OF Tyler

Know All Men By These Presents:

VOL. 002 PAGE 337

That WE, H. C. COBB AND WIFE, DAISY COBB

of the County of Tyler, state of Texas, for and in consideration of

Thirty-two and 01/100 --- (\$32.01) --- Dollars

to me (us) in hand paid by the GULF STATES UTILITIES COMPANY, a corporation duly incorporated and existing under the laws of the State of Texas, the receipt of which is hereby acknowledged, have granted, sold and conveyed, and by these presents do grant, sell and convey unto the said GULF STATES UTILITIES COMPANY, its successors and assigns, the RIGHT, PRIVILEGE AND EASEMENT to enter upon and to erect, construct, maintain, operate, inspect, replace, repair, patrol, and remove one or more lines of wood or metal structures, which may be erected simultaneously or at some future time, with lines of wire, crossarms, guy wires, conduits, stubs and other usual fixtures for the transportation of electricity, and grantees communications, together with all necessary foundations, anchors and braces to properly support the same upon, over and across the certain tract or parcel of land owned by the undersigned,

situated in the E. F. Hanks A-20 Survey, in Tyler County,

Texas, fully described in Vol. 106, Page 206, Deed Records of Tyler

County, Texas, to which reference is hereby made for description.

Said strip of land over which this easement is granted being 62.5 feet on each side of the following described line, and continuations or projections thereof, insofar as same may be embraced within the boundaries of the above described tract, said line being more particularly described as follows:

Entering this tract of land at a point in the South boundary thereof and the North boundary of property owned by Mrs. Leonora I. Moore, said point of beginning being located 80.5 feet Easterly from the Southwest corner of this tract of land;

Thence, N 4°-18' West 176 feet, upon, over and across this tract of land, crossing the North boundary thereof and the South right-of-way line of the graded road, at a point of ending located 67.5 feet Easterly from the Northwest corner of this tract of land.

The centerline of the above described right-of-way is located 37.5 feet East of the centerline of the existing electric power line on this tract of land.

It is understood and agreed that the present electric power line located on the property of the grantor in the 125-foot right-of-way above described will remain in place by virtue of the Easement rights granted herein, and this Easement will cancel and supersede all rights of the grantee under the Easement granted to the Gulf States Utilities Company by J. H. Fein, dated June 3, 1930, and recorded in Volume 64, Page 497, of the Deed Records of Tyler County, Texas.

It is understood and agreed that the existing structures will remain in place, but that no additional poles, foundations, anchors, or braces, will be placed in the ground upon such 125-foot right-of-way, but additional wires may be strung along, above, across, and over said strip of land.

And I (we) do hereby grant unto the said GULF STATES UTILITIES COMPANY, its successors and assigns, the right at any time and all times to trim, cut or remove such trees and underbrush upon the land lying within the above described easement; and to trim, cut or remove all dead, weak or dangerously leaning trees which are near or adjacent to said easement, as, in the judgment of said Company, might interfere with or endanger said line, or the operation thereof.

Grantor, for himself and for his heirs and assigns, retains the right to use for their own purposes all land under or adjacent to said electric line so long as such use does not interfere with the easement and rights herein given or conveyed. However, neither the grantor nor the grantor's heirs or assigns, will erect, locate, or permit the erection or location of, any structure or object, of any type or material, within a distance of 62.5 feet from said center line above described; but they may fence any or all of said land, in which event the GULF STATES UTILITIES COMPANY, its contractors and its successors and assigns shall have ingress and egress at any and all times to said land.

Damage to merchantable timber, improvements and growing crops in the construction, operation and maintenance of said electric lines shall be paid by grantee.

To Have and to Hold the above granted rights and easements, together with all and singular, the privileges and appurtenances thereto in anywise belonging unto the said GULF STATES UTILITIES COMPANY, its successors and assigns for so long as said line may be maintained or operated thereon.

And I (we) hereby covenant with said GULF STATES UTILITIES COMPANY, that I (we) have title to said land, and have the right to grant the privileges herein contained.

Witness my (our) hand at Durango Texas this 6th day of December, A. D. 1950

H. C. Cobb
Daisy Cobb

TRACT 109
80 107

SINGLE ACKNOWLEDGMENT

Vol. 002 p. 398

State of Texas, }
County of Tyler }

Before me, the undersigned authority in and for said State and County, on this day personally appeared
Henry Cobb

known to me to be the person... whose... is subscribed to the above and foregoing instrument, and acknowledged to me that he... executed the same for the purposes and consideration therein expressed.

Given under my hand and seal of office this 6th day of December A. D. 19 50

H. G. ...

Notary Public in and for Tyler County, Texas

JOINT ACKNOWLEDGMENT

State of Texas, }
County of Tyler }

Before me, the undersigned authority in and for said State and County, on this day personally appeared
H. C. Cobb, and wife Daisy Cobb

known to me to be the persons whose names are subscribed to the foregoing instrument, and acknowledged to me that they executed the same for the purposes and consideration therein expressed; and the said Daisy Cobb

wife of said H. C. Cobb, having been examined by me privily and apart from her husband, and having the same fully explained to her, she, the said Daisy Cobb

acknowledged said instrument to be her act and deed and declared that she had willingly signed the same for the purposes and consideration therein expressed, and that she did not wish to retract it.

Given under my hand and seal of office this the... day of... A. D. 19...

Notary Public in and for Tyler County, Texas

220
13/1/50

Tract No. 109
H. C. COBB ET UX

TO

Gulf States Utilities Company

EASEMENT

12-6-50

I, *H. G. ...*
County Clerk in and for said County, hereby certify that the foregoing instrument of writing was filed in my office for record on the... day of... 1950 at... o'clock P.M., and duly recorded by me on the... day of... 1950 in Book... Records of Deeds.
Given under my hand and seal of office the day and year last above written.

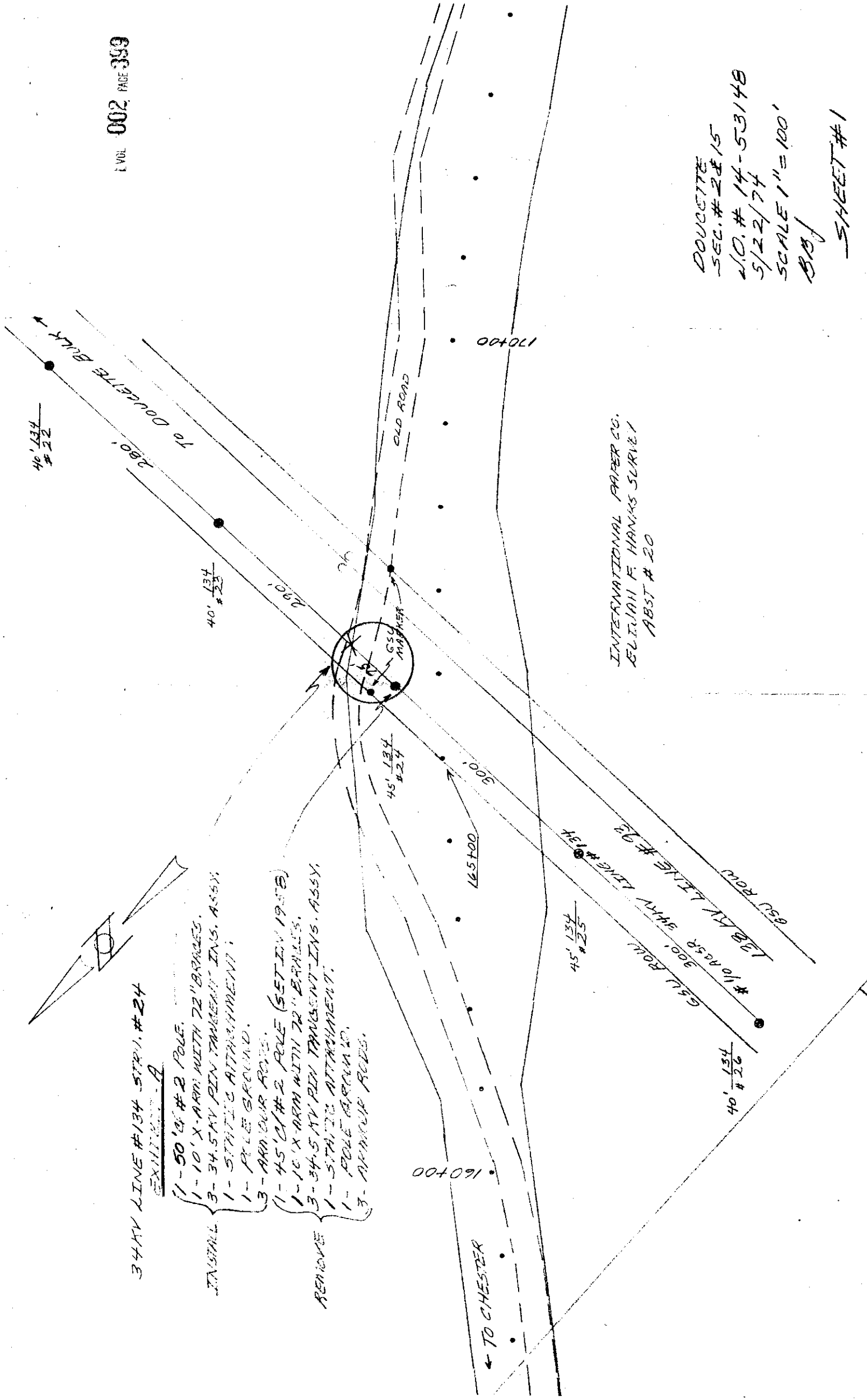
County Clerk... County, Texas
By... Deputy

No. 88,103
69 KV LINE #88
BEAUMONT - WOODVILLE SECTION
REQ. E-679

STATE OF TEXAS }
County of Tyler }
I HEREBY CERTIFY that the foregoing instrument with its certificate of authentication, was filed for record in my office on the 5th day of Dec. 1950 at 11:30 o'clock P.M., and was this day duly recorded at 2:30 o'clock A.M. in Vol 189 pages 160 of seq. Deed Records of said County.
WITNESS my hand and official seal, at office in Woodville, this, the 5th day of Dec. 1950

Tom Sawyer
Clerk, County Court, Tyler County, Texas
By *Jud. Windham* Deputy

APPROVED AS TO FORM
ORGAIN, BELL & TUCKER
/s/ Major T. Bell
By...

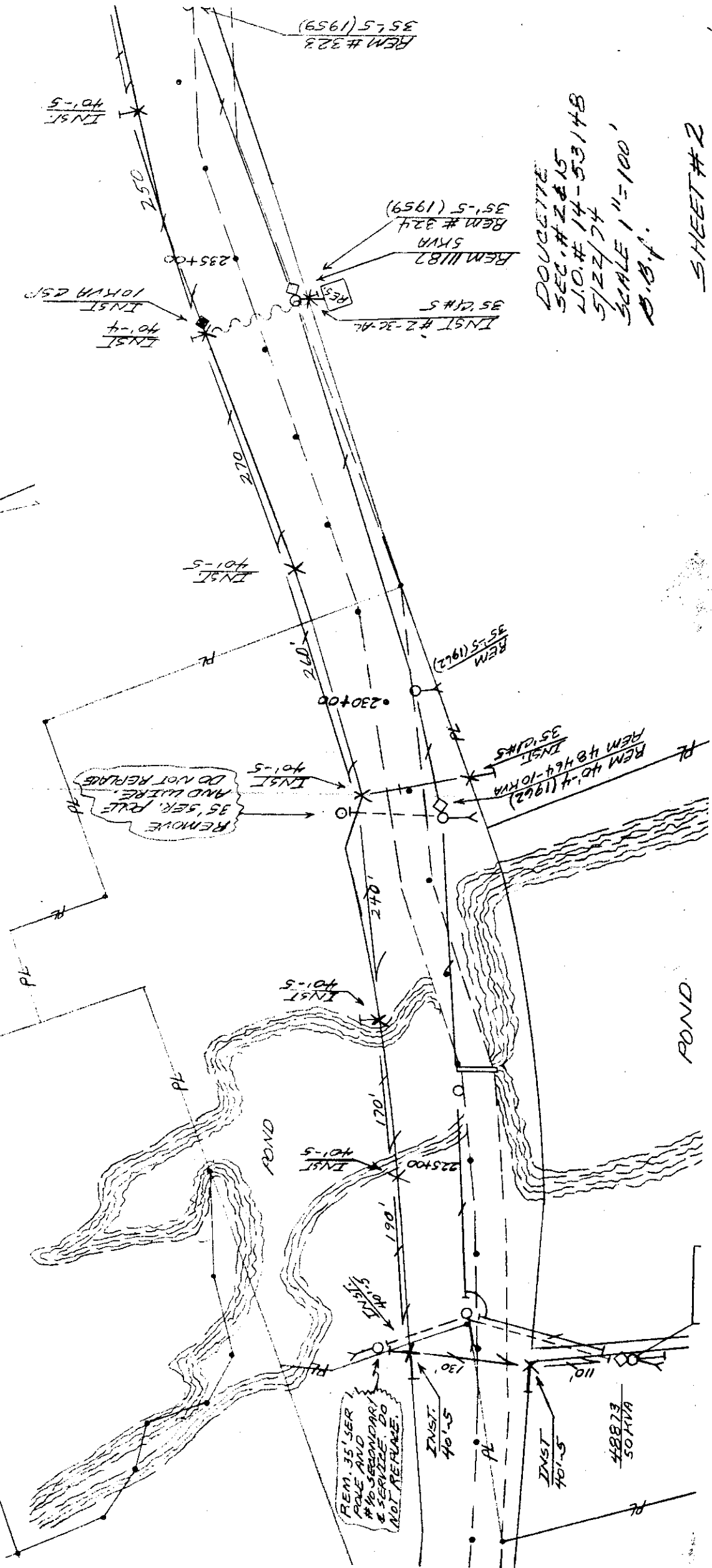
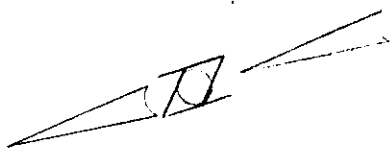


34KV LINE #134 STR. #24
EXHIBIT - A

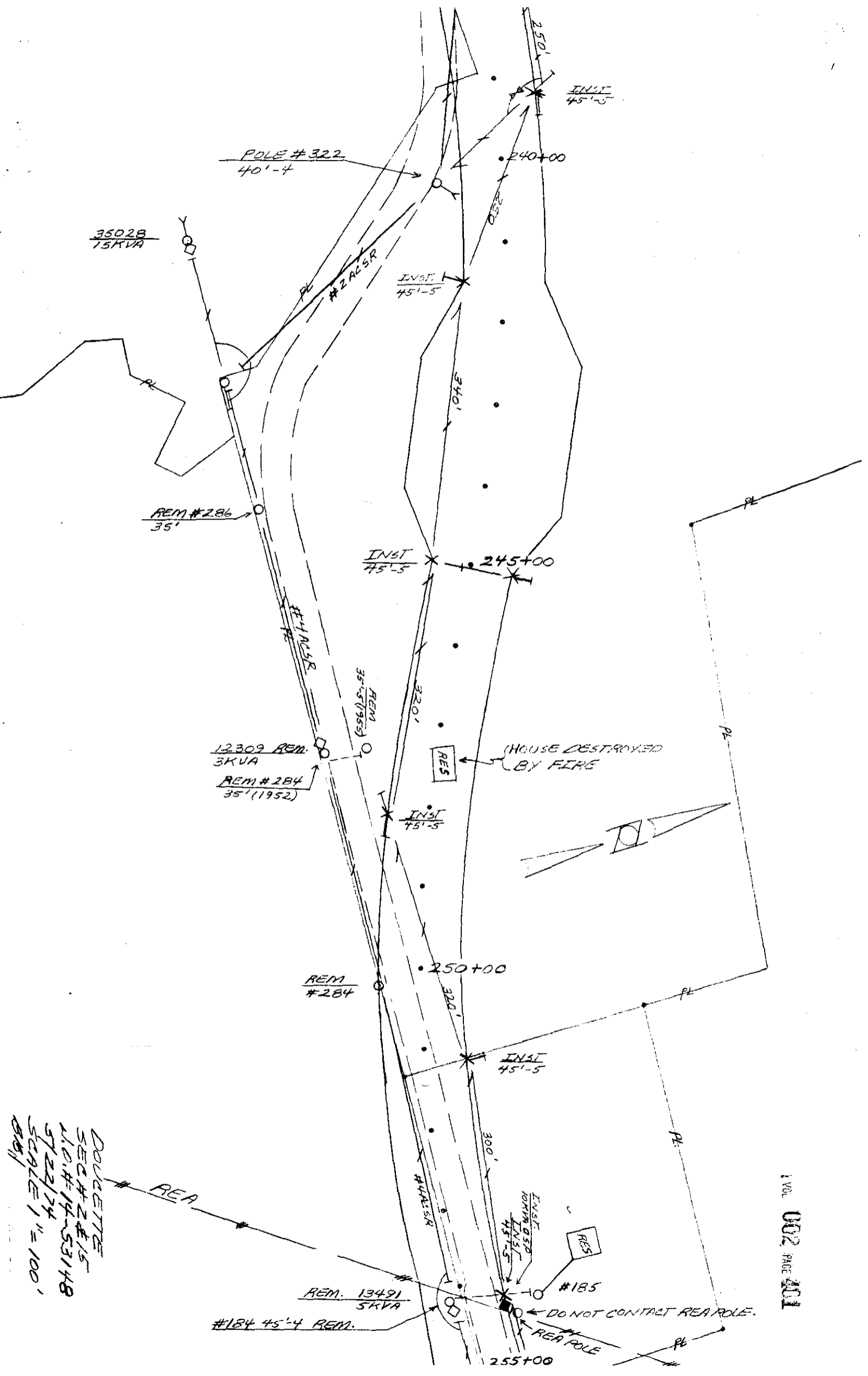
- INSTALL
- 1- 50' O.D. #2 POLE.
 - 1- 10' X-ARM WITH 72" BRACES.
 - 3- 34.5KV PIN TANGENT INS. ASSY.
 - 1- STATIC ATTACHMENT.
 - 1- PILE GROUND.
 - 3- ARMOUR RODS.
- REMOVE
- 1- 45' O.D. #2 POLE (SET IN 1958)
 - 1- 10' X-ARM WITH 72" BRACES.
 - 3- 34.5KV PIN TANGENT INS. ASSY.
 - 1- STATIC ATTACHMENT.
 - 1- POLE GROUND.
 - 3- ARMOUR RODS.

INTERNATIONAL PAPER CO.
EULIJAH F. HANKS SURVEY
ABST # 20

DOUGGETTE
SEC. # 2 & 15
N.O. # 14-53148
5/22/74
SCALE 1" = 100'
BIB
SHEET # 1



DOUGETTE
 SEC. # 2 & 15
 T.O. # 14-53148
 5/22/74
 SCALE 1"=100'
 D.B.f.



35028
15KVA

POLE # 322
40'-4

INST
45'-5

240+00

INST
45'-5

REM # 286
35'

INST
45'-5

245+00

REM
35'-5 (1952)

12309 REM.
3KVA

REM # 284
35' (1952)

INST
45'-5

HOUSE DESTROYED
BY FIRE

250+00

REM
284

INST
45'-5

300'

INST
45'-5

RES

185

REM. 13491
5KVA

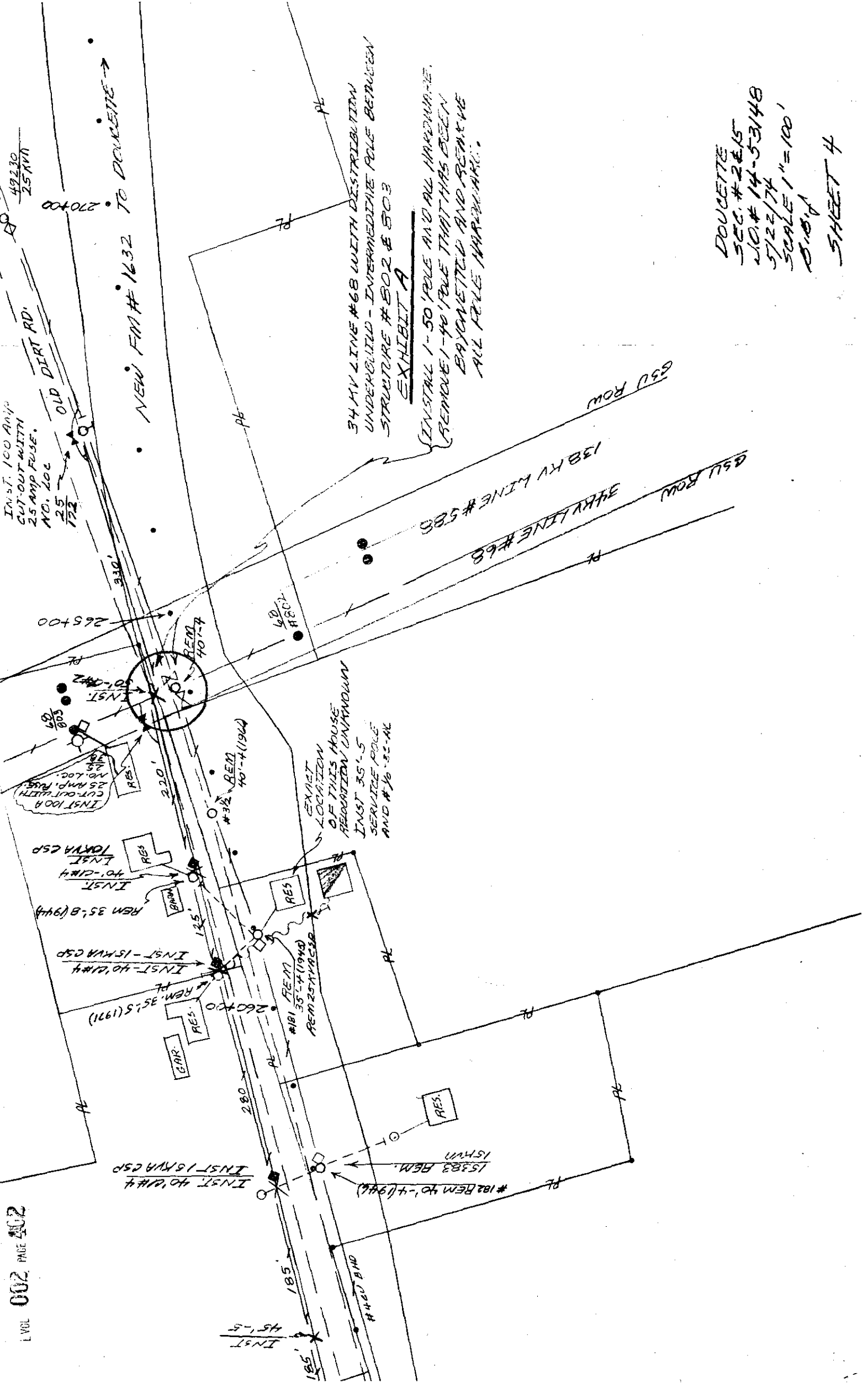
184 45'-4 REM.

INST
45'-5

DO NOT CONTACT REA POLE.

255+00

DOUGETTE
SEC # 2 & 15
L.O.# 14-53148
5/22/74
SCALE 1" = 100'
8/8/



INST. 100 AMP CUT-OUT WITH 25 AMP FUSE. NO. 202

49220 25 KV

NEW FM #1632 TO DOWNSITE

34 KV LINE #68 WITH DISTRIBUTION UNDERBUILT - INTERMEDIATE POLE BETWEEN STRUCTURE #B02 & B03 EXHIBIT A

INSTALL 1-50' POLE AND ALL HARDWARE. REMOVE 1-40' POLE THAT HAS BEEN BAYONNETTED AND REMOVE ALL POLE HARDWARE.

EXACT LOCATION OF THIS HOUSE RELOCATION UNKNOWN INST 35' S SERVICE POLE AND #76-51-AL

DOUCETTE
SEC. #2 & 5
NO. #14-53148
5/22/74
SCALE 1"=100'
D. B. A.
SHEET 4

Sealed bids addressed to the County of Tyler, for the following:

MOTOR GRADER SPECIFICATIONS

ENGINE: Six Cylinder, four cycle Diesel with not less than 130 Flywheel horse power at 1800 RPM
CLUTCH: Oil Clutch, power-boosted
CONTROLS: Hydraulic over Mechanical
WEIGHT: Not less than 27,000 pounds, standard machine
MOLDBOARD: 12 foot Hydraulic side shift
STERING: Full Power with standard transmission
BRAKES: Self adjusting, four wheel power brake
TIRES: 13:00 X 24, 10 ply (a trade-in to be applied)

PAYMENT:

Trade-In to be down payment and Time Warrants issued on the balance

Time Warrants will bear a 5% interest rate

One Time Warrant becoming due in 1975, the next in 1976 and the last one in 1977.

Bidder should state in his bid whether he will dispose of the Time Warrants or whether he wants the County to dispose of them.

will be received in the Office of the County Clerk, County of Tyler, Texas, Courthouse, Woodville, Texas, until 10:00 am/~~PM~~ on Friday, 14th day of June, 1974. at which time and place all bids received shall be opened and read.

Further information and details are available in the office of the County Clerk, County of Tyler, Texas. The County of Tyler reserves the right to reject any or all bids and to waive informalities.

Allen Sturrock
County Clerk, Tyler
County, Texas.